



## Maintenance Log Triangle

---

### DRAGONFLY MAINTENANCE REPORT

---

#### Project Details

Property	SOUTHERN VILLAGE
Service Date	01/14/2021
Crew Member(s)	WF, DG
Client Name	Adam Jones
Client Email Address	adam@millhouseproperties.com
Client Email Address 2	patsy@millhouseproperties.com
Client Email Address 3	
Client Email Address 4	
Number of Ponds & Pond Type	4 Wet Ponds
Mowing Schedule	2 Mowings Per Year
Mowing Service	
Mowing occurs inside of the fence.	
Special Instructions	
Pond 4 #1234	
Pond Locations	<a href="https://imageshack.com...">https://imageshack.com...</a>

#### Code Types

- SC= Service Completed - Means a service or review has been completed and is in good working order.
- M= Monitoring (for any potential future problems) - Means that we may continue to review and note on regular reports. This does NOT mean there is an issue or any additional work is needed at this time.
- WN= Work Needed - Means there is work needed outside the normal scope of maintenance
- N/A= Not Applicable - Means nothing is found to be noted, there are no issues.
- NN= Not Needed - Means this has been investigated and found that no work is currently needed.

### MAINTENANCE LOG

---

Pond Name	WP 1
Access Address	1200 Highgrove Dr Chapel Hill, NC 27516
Trash Pickup	SC= Service Completed
Treat Invasives	M= Monitoring (for any potential future problems)
Inlet service	M= Monitoring (for any potential future problems)
Outlet Service	M= Monitoring (for any potential future problems)
Unclog Drain	M= Monitoring (for any potential future problems)
Clean Riser/Trash rack	M= Monitoring (for any potential future problems)
Add Dye?	N/A= Not Applicable
Fountain/Aerator Condition	N/A= Not Applicable
Mow/Weed eat	M= Monitoring (for any potential future problems)



## Maintenance Log Triangle

---

Overview of the pond



Dam



## Maintenance Log Triangle

---

Riser



Inlet





## Maintenance Log Triangle

---

Outlet



### Additional Notes

Trash and debris were removed from the system. Erosion can be seen along the shoreline due to extended periods of high water. Noted image 1 shows sedimentation in the creek inlet. Noted image 2 shows a secondary submerged inlet. Noted images 3 and 4 show slow leaks inside the access hatch.



Noted Image 1



Noted Image 2



Noted Image 3



Image 4

Pond Name

WP 2



### Maintenance Log Triangle

---

Access Address	600 Brookgreen Dr Chapel Hill, NC 27516
Trash Pickup	SC= Service Completed
Treat Invasives	M= Monitoring (for any potential future problems)
Inlet service	M= Monitoring (for any potential future problems)
Outlet Service	M= Monitoring (for any potential future problems)
Unclog Drain	M= Monitoring (for any potential future problems)
Clean Riser/Trash rack	M= Monitoring (for any potential future problems)
Add Dye?	N/A= Not Applicable
Fountain/Aerator Condition	M= Monitoring (for any potential future problems)
Mow/Weed eat	M= Monitoring (for any potential future problems)
Overview of the pond	M= Monitoring (for any potential future problems)



Maintenance Log Triangle

---

Dam



Riser





Maintenance Log Triangle

---

Inlet



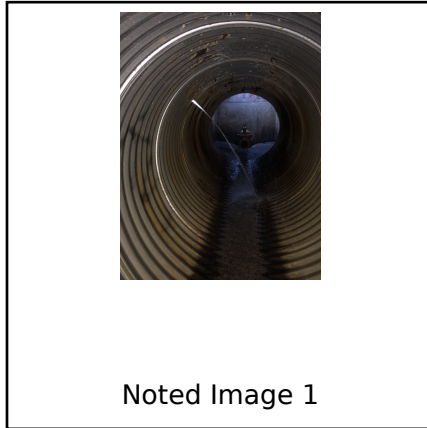
Outlet



Maintenance Log Triangle

Additional Notes

Trash was removed from the system. Noted image 1 shows a leak in the outlet pipe close to the riser. Noted image 2 shows a secondary submerged inlet. Noted image 3 shows a rut in the slope beside the road. The tubes for the aerator were buried.



Noted Image 1



Noted Image 2



Noted Image 3

Pond Name	WP 3
Access Address	111 Parkside Cir Chapel Hill, NC 27516
Trash Pickup	SC= Service Completed
Treat Invasives	M= Monitoring (for any potential future problems)
Inlet service	M= Monitoring (for any potential future problems)
Outlet Service	M= Monitoring (for any potential future problems)
Unclog Drain	SC= Service Completed
Clean Riser/Trash rack	M= Monitoring (for any potential future problems)
Add Dye?	N/A= Not Applicable
Fountain/Aerator Condition	N/A= Not Applicable
Mow/Weed eat	M= Monitoring (for any potential future problems)
Overview of the pond	





## Maintenance Log Triangle

---

Dam



Riser



Maintenance Log Triangle

---

Inlet



Outlet

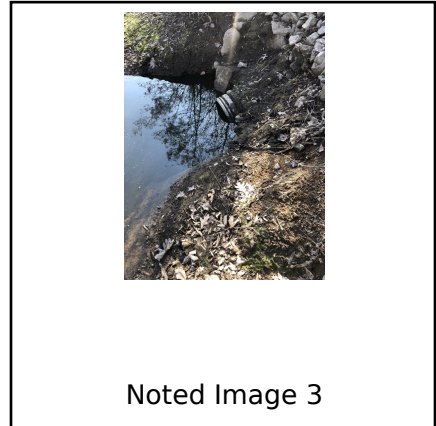




## Maintenance Log Triangle

### Additional Notes

Trash was removed from the system. Erosion along the shoreline persists due to extended periods of high water and a clogged drawdown. Sediment build up can be seen at the creek inlet. Noted images 1 through 4 show the secondary inlets. The inlet shown in image 1 shows chips in the FES. The inlet in image 2 shows sedimentation.



Pond Name	WP 4
Access Address	501 Kildaire Rd, Chapel Hill, NC 27516
Trash Pickup	SC= Service Completed
Treat Invasives	M= Monitoring (for any potential future problems)
Inlet service	M= Monitoring (for any potential future problems)
Outlet Service	M= Monitoring (for any potential future problems)
Unclog Drain	M= Monitoring (for any potential future problems)
Clean Riser/Trash rack	M= Monitoring (for any potential future problems)
Add Dye?	N/A= Not Applicable



Maintenance Log Triangle

---

Fountain/Aerator Condition

M= Monitoring (for any potential future problems)

Mow/Weed eat

M= Monitoring (for any potential future problems)

Overview of the pond



Dam



## Maintenance Log Triangle

---

Riser



Inlet





## Maintenance Log Triangle

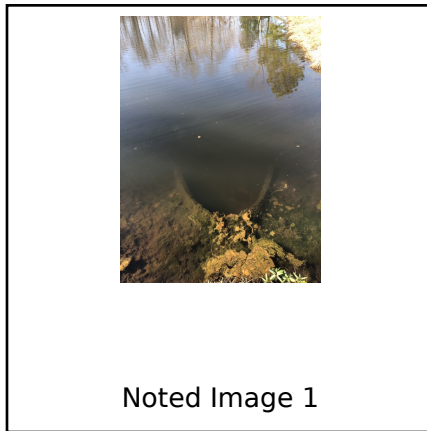
---

### Outlet

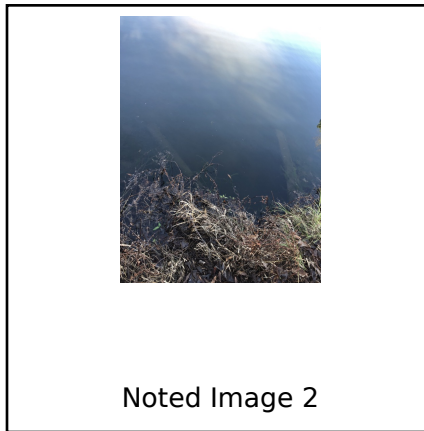


### Additional Notes

Trash was removed from the system. Erosion along the shoreline persists due to periods of high water. Noted 1 and 2 show secondary submerged inlets. Noted image 3 shows after woody vegetation was cleared along the shoreline to improve access to the system. Noted image 4 shows saturated soil.



Noted Image 1



Noted Image 2



Noted Image 3



Maintenance Log Triangle

---



Image 4