



Maintenance Log Triangle

DRAGONFLY MAINTENANCE REPORT

Project Details

Property	SOUTHERN VILLAGE
Service Date	03/19/2020
Crew Member(s)	WF
Client Name	Adam Jones
Client Email Address	adam@millhouseproperties.com
Client Email Address 2	patsy@millhouseproperties.com
Client Email Address 3	
Client Email Address 4	
Number of Ponds & Pond Type	4 Wet Ponds
Mowing Schedule	2 Mowings Per Year
Mowing Service	
Mowing occurs inside of the fence.	
Special Instructions	
Pond 4 #1234	
Pond Locations	https://imageshack.com...

Code Types

- SC= Service Completed - Means a service or review has been completed and is in good working order.
- M= Monitoring (for any potential future problems) - Means that we may continue to review and note on regular reports. This does NOT mean there is an issue or any additional work is needed at this time.
- WN= Work Needed - Means there is work needed outside the normal scope of maintenance
- N/A= Not Applicable - Means nothing is found to be noted, there are no issues.
- NN= Not Needed - Means this has been investigated and found that no work is currently needed.

MAINTENANCE LOG

Pond Name	WP 1
Access Address	1200 Highgrove Dr Chapel Hill, NC 27516
Trash Pickup	SC= Service Completed
Treat Invasives	M= Monitoring (for any potential future problems)
Inlet service	WN= Work Needed
Outlet Service	M= Monitoring (for any potential future problems)
Unclog Drain	M= Monitoring (for any potential future problems)
Clean Riser/Trash rack	M= Monitoring (for any potential future problems)
Add Dye?	N/A= Not Applicable
Fountain/Aerator Condition	N/A= Not Applicable
Mow/Weed eat	M= Monitoring (for any potential future problems)

Maintenance Log Triangle

Overview of the pond



Dam



Riser



Maintenance Log Triangle

Inlet



Outlet



Additional Notes

Trash was removed from the system and woody debris was removed from the shoreline. Noted images 1 and 2 show secondary inlets. Noted images 3 and 4 show the sediment delta in the head section.



Noted Image 1



Noted Image 2



Noted Image 3

Maintenance Log Triangle



Pond Name	WP 2
Access Address	600 Brookgreen Dr Chapel Hill, NC 27516
Trash Pickup	SC= Service Completed
Treat Invasives	M= Monitoring (for any potential future problems)
Inlet service	M= Monitoring (for any potential future problems)
Outlet Service	M= Monitoring (for any potential future problems)
Unclog Drain	SC= Service Completed
Clean Riser/Trash rack	SC= Service Completed
Add Dye?	N/A= Not Applicable
Fountain/Aerator Condition	M= Monitoring (for any potential future problems)
Mow/Weed eat	M= Monitoring (for any potential future problems)
Overview of the pond	



Maintenance Log Triangle

Dam



Riser



Maintenance Log Triangle

Inlet



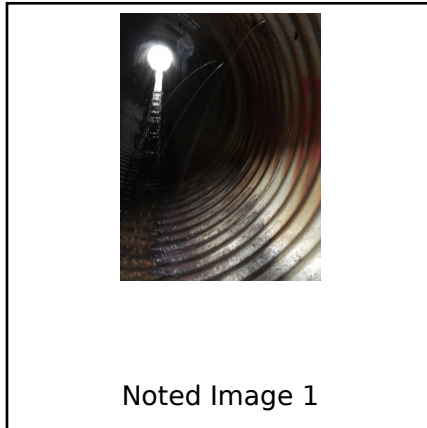
Outlet



Additional Notes

Trash was removed from the system and the drawdown was cleared of debris. Noted image 1 shows leaks in the outlet pipe. Noted image 2 shows disturbed soil along the pond slope. Noted image 3 shows exposed soil on the shoreline. Noted image 4 shows a secondary inlet.

Maintenance Log Triangle



Pond Name	WP 3
Access Address	111 Parkside Cir Chapel Hill, NC 27516
Trash Pickup	SC= Service Completed
Treat Invasives	SC= Service Completed
Invasives Treated (where applicable)	Terrestrial weeds
Inlet service	SC= Service Completed
Outlet Service	WN= Work Needed
Unclog Drain	SC= Service Completed
Clean Riser/Trash rack	M= Monitoring (for any potential future problems)
Add Dye?	N/A= Not Applicable
Fountain/Aerator Condition	N/A= Not Applicable
Mow/Weed eat	M= Monitoring (for any potential future problems)

Maintenance Log Triangle

Overview of the pond



Dam



Riser





Maintenance Log Triangle

Inlet



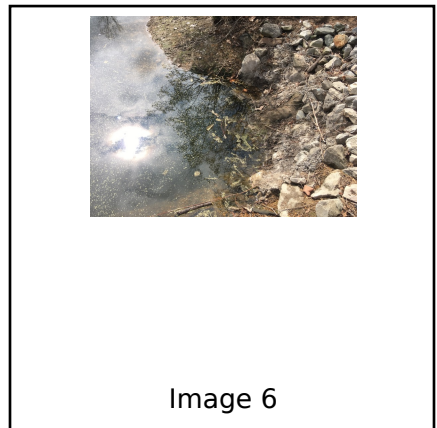
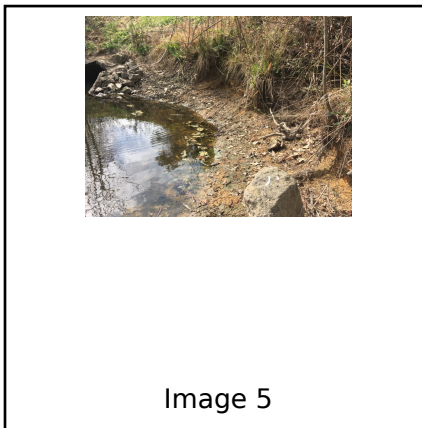
Outlet



Maintenance Log Triangle

Additional Notes

Trash was removed from the system. Unclogged the drawdown to restore normal water flow. Sediment deposition and washout persists at the creek inlet. Recommend additional riprap and T-bars to prevent washout. Noted image 1 shows the secondary inlet. Noted image 2 shows this inlet after the leaves were cleared. Noted through 3 show this inlet after the riprap was rearranged in order to cover the bare areas. Noted images 4 and 5 show a secondary inlet with exposed soil around the shoreline. Noted image 6 shows a secondary submerged inlet. Noted image 7 shows the outlet before unclogging the drawdown. Noted image 8 shows a large fallen tree at the outlet.



Maintenance Log Triangle



Pond Name	WP 4
Access Address	501 Kildaire Rd, Chapel Hill, NC 27516
Trash Pickup	SC= Service Completed
Treat Invasives	SC= Service Completed
Invasives Treated (where applicable)	Filamentous algae
Inlet service	M= Monitoring (for any potential future problems)
Outlet Service	M= Monitoring (for any potential future problems)
Unclog Drain	SC= Service Completed
Clean Riser/Trash rack	M= Monitoring (for any potential future problems)
Add Dye?	N/A= Not Applicable
Fountain/Aerator Condition	M= Monitoring (for any potential future problems)
Mow/Weed eat	M= Monitoring (for any potential future problems)
Overview of the pond	



Maintenance Log Triangle

Dam



Riser



Maintenance Log Triangle

Inlet



Outlet



Additional Notes

Trash was removed from the system and the drawdown was unclogged. The system was treated for filamentous algae. Noted image 1 shows the inside of the riser after the drawdown was unclogged. Noted image 2 shows the inside of the riser. Noted image 3 shows a secondary inlet. Noted image 4 shows an area of saturated soil.

Maintenance Log Triangle



Noted Image 1



Noted Image 2



Noted Image 3



Image 4