



Maintenance Log Triangle

DRAGONFLY MAINTENANCE REPORT

Project Details

Property	SOUTHERN VILLAGE
Service Date	02/19/2020
Crew Member(s)	Will Feely
Client Name	Adam Jones
Client Email Address	adam@millhouseproperties.com
Client Email Address 2	
Client Email Address 3	
Client Email Address 4	
Number of Ponds & Pond Type	4 Wet Ponds
Mowing Schedule	2 Mowings Per Year
Mowing Service	
Mowing occurs inside of the fence.	
Special Instructions	
Pond 4 #1234	
Pond Locations	https://imageshack.com...

Code Types

- SC= Service Completed - Means a service or review has been completed and is in good working order.
M= Monitoring (for any potential future problems) - Means that we may continue to review and note on regular reports. This does NOT mean there is an issue or any additional work is needed at this time.
WN= Work Needed - Means there is work needed outside the normal scope of maintenance
N/A= Not Applicable - Means nothing is found to be noted, there are no issues.
NN= Not Needed - Means this has been investigated and found that no work is currently needed.

MAINTENANCE LOG

Pond Name	WP 1
Trash Pickup	SC= Service Completed
Treat Invasives	M= Monitoring (for any potential future problems)
Inlet service	M= Monitoring (for any potential future problems)
Outlet Service	M= Monitoring (for any potential future problems)
Unclog Drain	SC= Service Completed
Clean Riser/Trash rack	M= Monitoring (for any potential future problems)
Add Dye?	N/A= Not Applicable
Fountain/Aerator Condition	N/A= Not Applicable
Mow/Weed eat	M= Monitoring (for any potential future problems)

Maintenance Log Triangle

Overview of the pond



Dam



Maintenance Log Triangle

Riser



Inlet



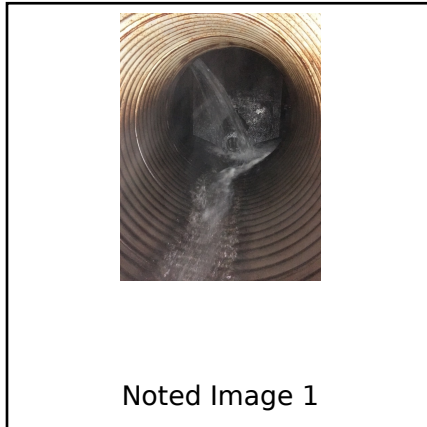
Maintenance Log Triangle

Outlet



Additional Notes

Trash was removed from the system and the drawdown was cleared of debris. Noted image 1 shows the inside of the riser with the drawdown draining properly. Noted image 2 shows an additional stormwater pipe in the outlet area. Noted images 3 and 4 show areas of bare soil around the shoreline. Noted image 5 shows a secondary inlet.



Pond Name

WP 2

Maintenance Log Triangle

Trash Pickup	SC= Service Completed
Treat Invasives	M= Monitoring (for any potential future problems)
Inlet service	M= Monitoring (for any potential future problems)
Outlet Service	M= Monitoring (for any potential future problems)
Unclog Drain	M= Monitoring (for any potential future problems)
Clean Riser/Trash rack	SC= Service Completed
Add Dye?	N/A= Not Applicable
Fountain/Aerator Condition	M= Monitoring (for any potential future problems)
Mow/Weed eat	M= Monitoring (for any potential future problems)
Overview of the pond	M= Monitoring (for any potential future problems)



Dam



Maintenance Log Triangle

Riser



Inlet



Maintenance Log Triangle

Outlet



Additional Notes

Trash was removed from the system and the drawdown was unclogged. The air filter for the compressor was cleaned. Noted images 1 and 2 show the drawdown before and after clearing the obstruction. Noted image 3 shows the compressor box. Noted image 4 show areas of bare soil that extend around the shoreline. Noted image 5 shows small leaks and rust damage in the outlet pipe.



Pond Name

WP 3

Maintenance Log Triangle

Trash Pickup
 Treat Invasives

SC= Service Completed
 M= Monitoring (for any potential future problems)

Inlet service
 Outlet Service
 Unclog Drain
 Clean Riser/Trash rack

WN= Work Needed
 WN= Work Needed
 SC= Service Completed
 M= Monitoring (for any potential future problems)

Add Dye?
 Fountain/Aerator Condition
 Mow/Weed eat

N/A= Not Applicable
 N/A= Not Applicable
 M= Monitoring (for any potential future problems)

Overview of the pond



Dam



Maintenance Log Triangle

Riser



Inlet



Maintenance Log Triangle

Outlet



Additional Notes

Trash was removed from the system and leaves were cleared from the inlet. The drawdown was unclogged. High water level due to rain events and an obstructed drawdown. Noted images 1 and 2 show the drawdown before and after removing the obstruction. Noted image 3 shows a fallen tree at the outlet area. Noted images 4 through 6 show secondary inlets. Noted image 7 shows a dead tree along the backside of the dam.



Noted Image 1

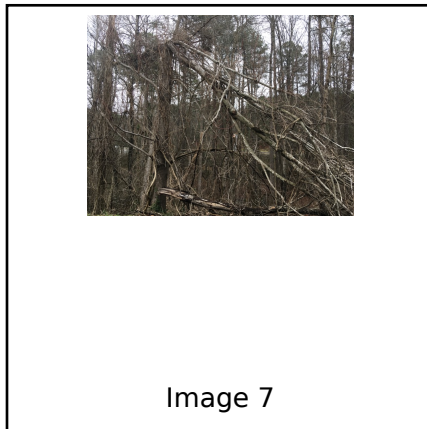
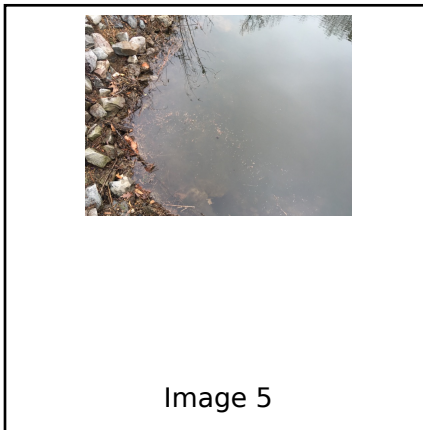
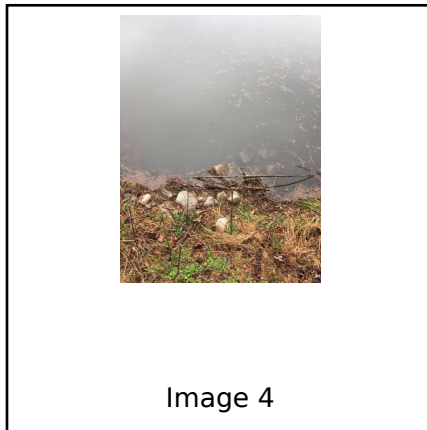


Noted Image 2



Noted Image 3

Maintenance Log Triangle



Pond Name	WP 4
Trash Pickup	SC= Service Completed
Treat Invasives	M= Monitoring (for any potential future problems)
Inlet service	M= Monitoring (for any potential future problems)
Outlet Service	M= Monitoring (for any potential future problems)
Unclog Drain	M= Monitoring (for any potential future problems)
Clean Riser/Trash rack	M= Monitoring (for any potential future problems)
Add Dye?	N/A= Not Applicable
Fountain/Aerator Condition	M= Monitoring (for any potential future problems)
Mow/Weed eat	N/A= Not Applicable

Maintenance Log Triangle

Overview of the pond



Dam



Maintenance Log Triangle

Riser



Inlet



Maintenance Log Triangle

Outlet



Additional Notes

Trash was removed from the system and woody debris was removed from the outlet. The air filter for the compressor was cleaned. Noted images 1 and 2 show secondary inlets. Noted image 3 shows a saturated area of the shoreline.



Noted Image 1



Noted Image 2



Noted Image 3